

OUR COMMITMENT TO FAMILIES

MVACL is committed to providing the highest quality of supports to the people receiving supports and their family. We will make every effort to accommodate respite requests to the best of our ability.

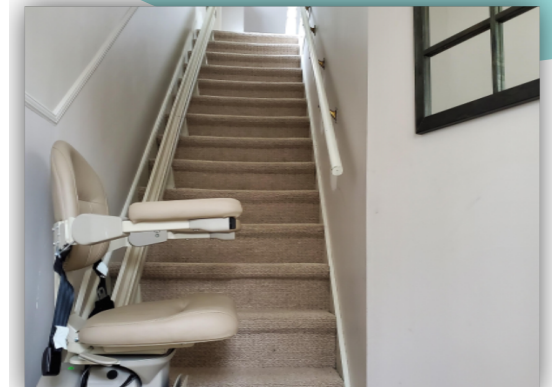
We also strive to enhance connections in our community.

- Applicable for Passport funding.
- \$20.00 per day. Check in and check out is at 11 am.
- Support when using home to be arranged and provided by the user.
- Fully equipped kitchen, living room, bathroom with shower only and 2 bedrooms.
- Supply your own groceries.
- Short distance to amenities like hospital, grocery, library and Learning Centre.
- First come first serve basis.

Our Respite home is centrally located in the heart of Barry's Bay. It is close to the public beach and Lakeshore Park, the historic Train station, Water Tower and Zurokoski Park. It is also walking distance to our Learning Centre which is open to the community for exercise, internet and a variety of opportunities.

This 2nd story, air conditioned apartment is accessible by an electric stair lift.

Two bedrooms, a living room, bathroom with shower and fully equipped kitchen complete this facility.





Available for
medically fragile
children, individuals
with developmental
disabilities and their
families.



Contact Us

19460 Opeongo Line
P.O. Box 1178
Barry's Bay, Ontario
K0J 1B0

613 756 3817

www.mvACL.ca



facebook.com/mvACL



[madawaskavalleyassociation](https://madawaskavalleyassociation.org)



MVACL Respite

